

October 26 2018

MotionMount app and firmware release.

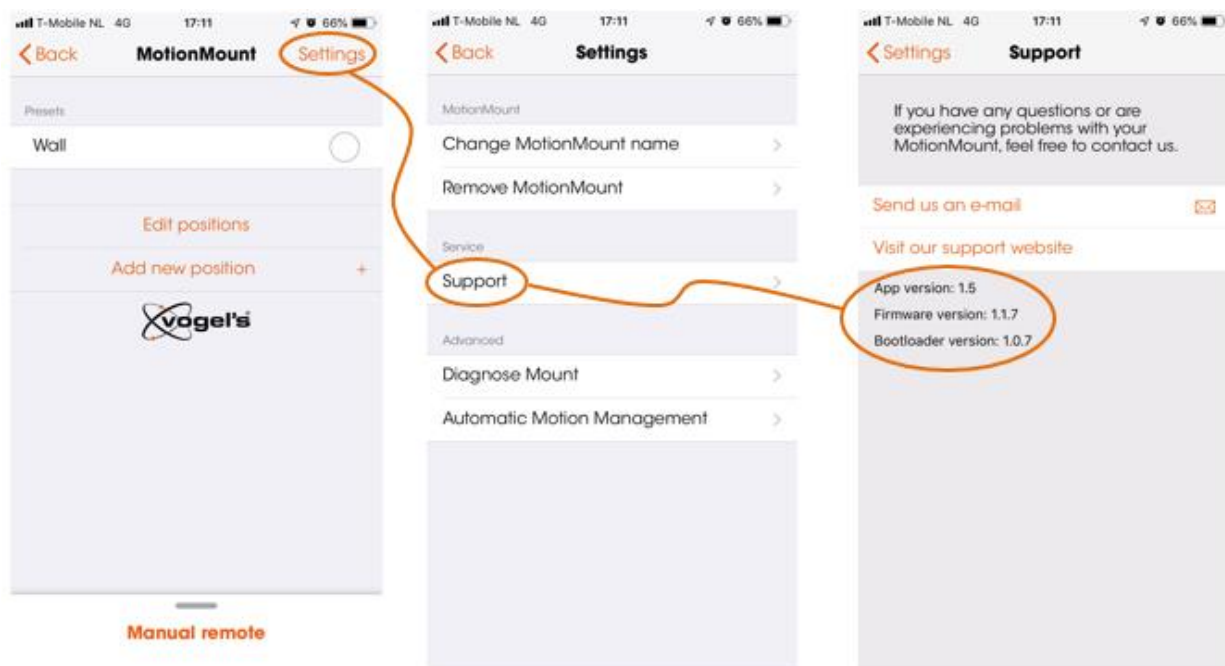
New versions of the MotionMount app have been released to the App Store and Google Play.

The MotionMount app is updated to version 1.5

The Firmware (MotionMount software) is updated to 1.1.7

The Bootloader (MotionMount operating software) is updated to 1.0.7

The version numbers can be found in the support page in the app settings menu:



Improvements:

- The update resolves most connectivity and compatibility issues in the field. However some specific (incompatible) devices are not supported (see below).
- In corporation with Loewe, the automatic motion (Auto Home) issues have been resolved for Loewe TVs .
- Besides this, the update provides new functionality for owners of Loewe TVs. They can now control the MotionMount directly by using the Loewe TV remote control.

Incompatible devices:

- Huawei P10Lite. Currently we are not able to resolve connectivity issues for this device. Investigation is ongoing.
- Apple devices with iOS versions older than 9.3.5 are not supported.

This update is valid for:

- NEXT 7355 MotionMount
- NEXT 7356 OLED MotionMount
- NEXT 8375 MotionSoundMount.

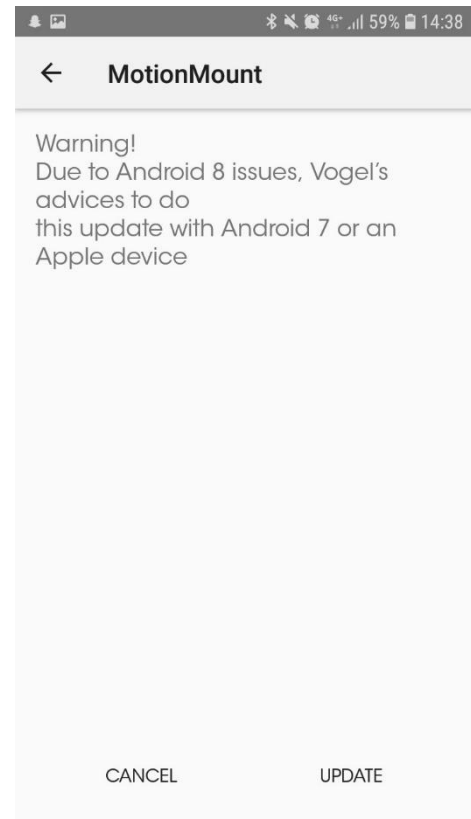
Connectivity issues:

Smartphones with Android 8

The update resolves connectivity issues for Android 8 devices. The update on the MotionMount can only be done by devices that can already connect to the mount.

After updating the mount, Android 8 devices will be able to connect again (the latest version of the app should be installed).

Android 8 devices that can connect with the MotionMount will receive a warning before starting the update.



Update Procedure

1. Download the latest version from the App store or Google Play (version 1.5)

App Store and Google Play notification:

This update (1.0.7):

- improves connectivity for android devices that are unable to connect to the MotionMount. The firmware update needs to be done with a device that can connect to the mount to permanently solve issues for other devices.
- Ensures compatibility with Loewe

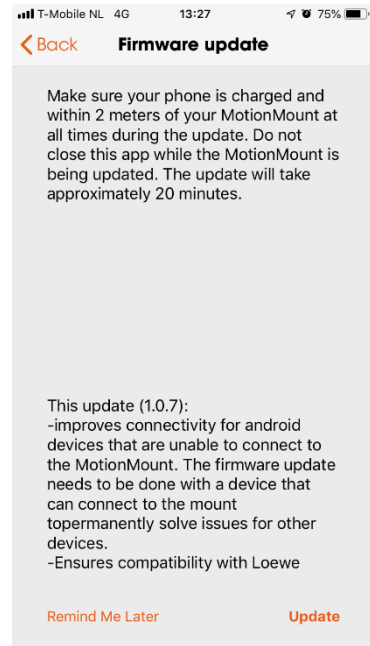
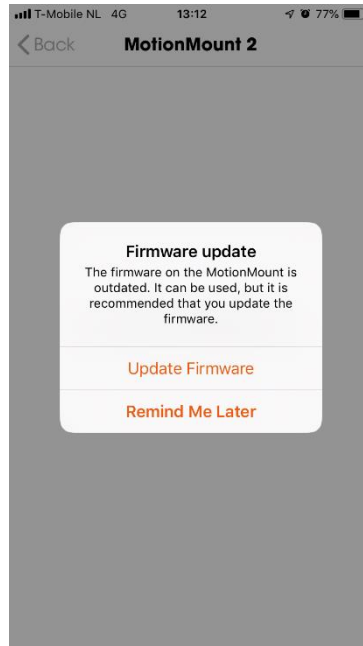
2. Open the app and connect with your MotionMount
3. Update the firmware
4. Start using the app

Possible in-app notifications:

MotionMount that have had regular updates :

The new app can be used in combination with the MotionMount with the current firmware implementation. New functionality and connectivity improvements will only be available after the update.

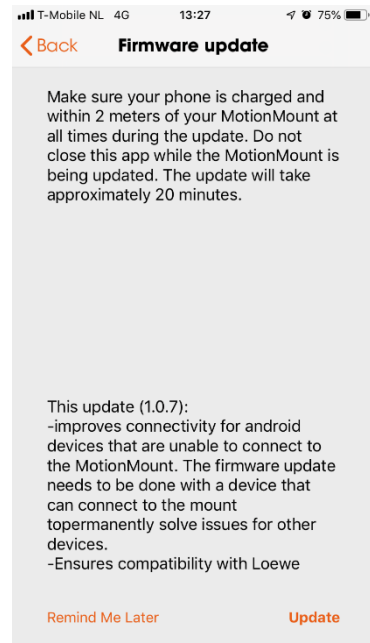
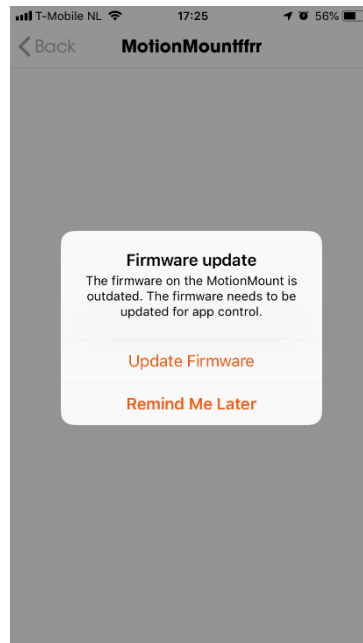
The update takes around 20 minutes.



MotionMounts that have not yet been updated:

The new app can be used in combination with the MotionMount after the firmware update. All functionality and connectivity improvements will only be available after the update.

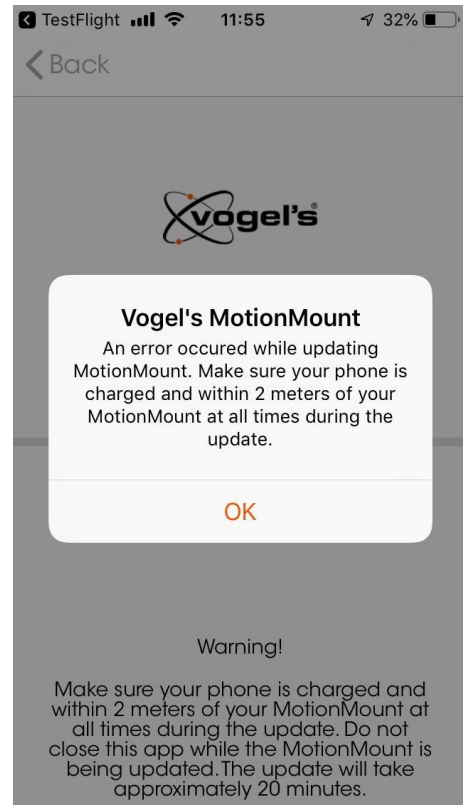
The update takes around 20 minutes.



Update issues

Normally the update will be completed in 20 minutes. In case the update is interrupted, the update needs to be restarted.

If update is interrupted, the MotionMount does not work until the update is completed.

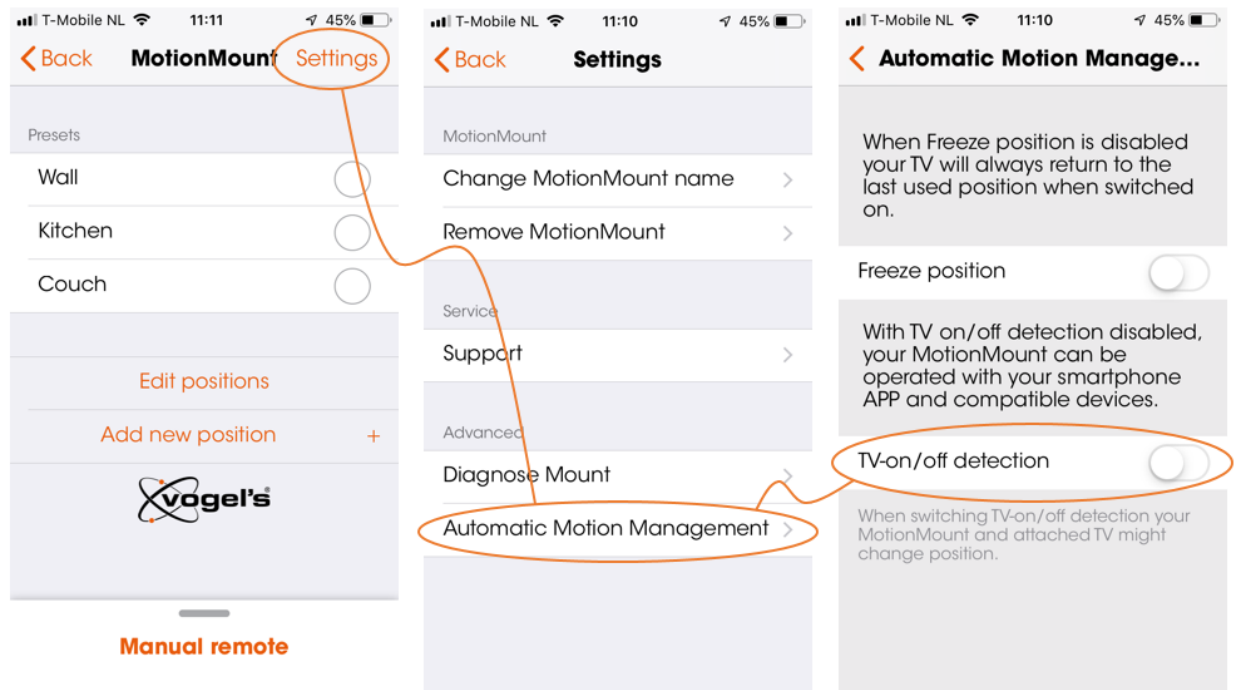


Loewe Compatibility:

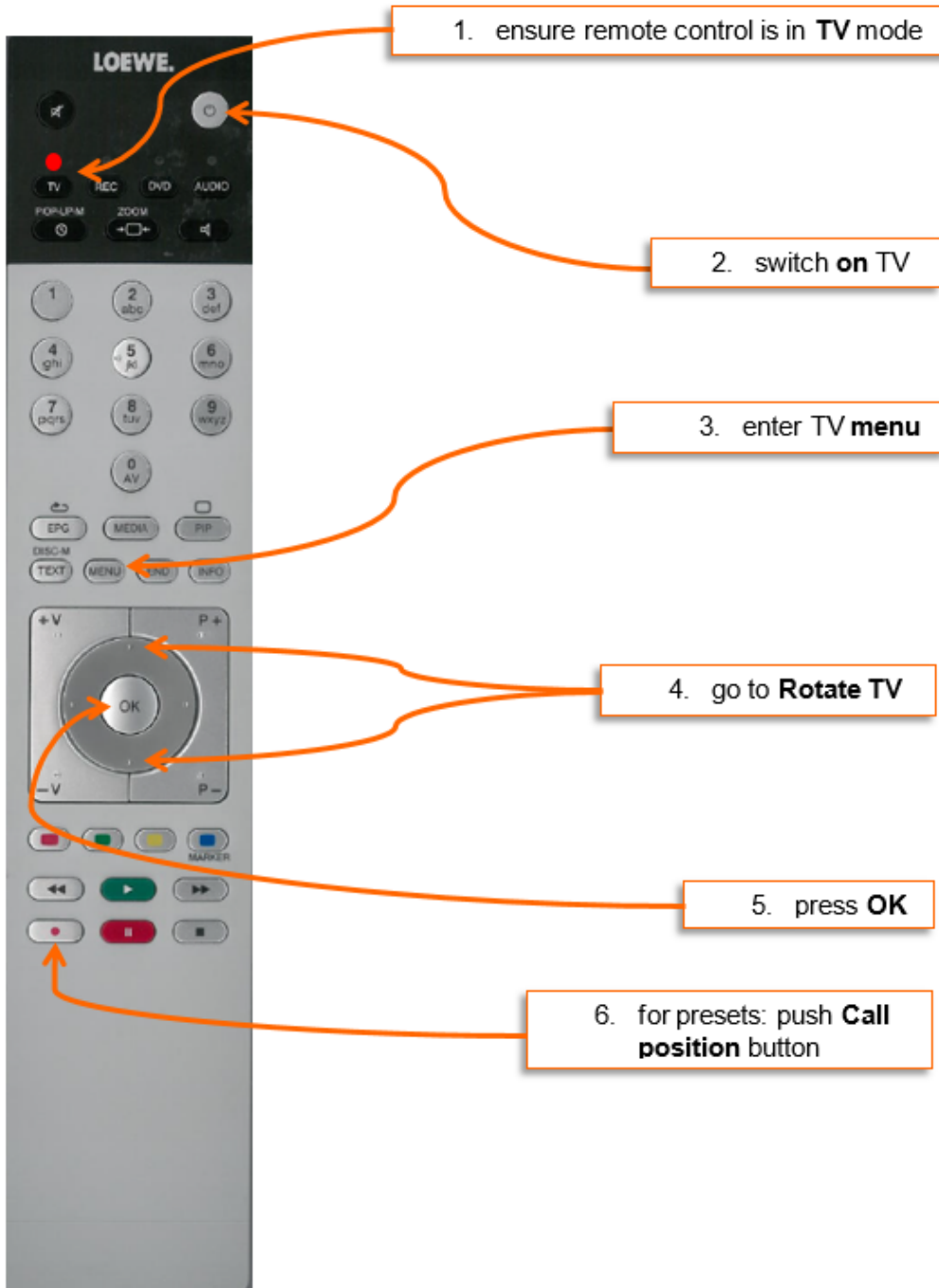
All Bild 1-9 Connect UHD, Art UHD, One UHD TVs (with 'Chassis SL4xx') with manufacturing date from 2016 onwards, can be updated with Loewe firmware version 5.0.27. This firmware makes the Loewe Bild TV compatible with the Vogel's MotionMount. The MotionMount is directly controlled by / via the Loewe tv via Bluetooth.

How to install the Vogel's MotionMount in combination with a Loewe TV

1. Install the MotionMount as mentioned in the Mounting Instructions
2. Make sure your Loewe TV is updated to the latest firmware version (min. required is version 5.0.27). Enable in TV menu Bluetooth and select MotionMount from the available Bluetooth devices.
The link / combination is dedicated.
3. Make sure the firmware of the MotionMount is updated to the latest version. This can be checked in the MotionMount app - 'Settings' (min. required is firmware version 1.1.7). Hereafter, you can control the MotionMount with the Loewe tv remote control and menus on the tv screen.
In the MotionMount (app), the TV-on/off detection based on power consumption measurement will be automatically disabled (Auto Home is also controlled by Bluetooth from TV set).



How to use / control the Vogel's MotionMount with a Loewe remote control



Attention: Always point the remote control to the front of the television (infra-red eye)!

For further information please contact: salesconsumer@vogels.com