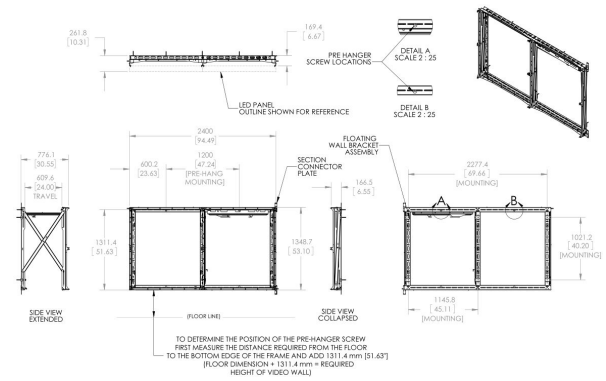
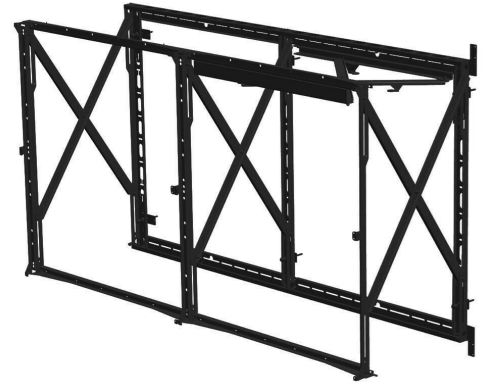
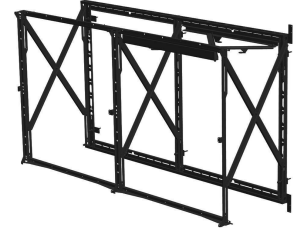




PLW 1002 2x2 LED video wall mount

This new rear service mounting solutions supports 2x2 Leyard or Philips LED tiles and provides up to 60 cm of smooth forward extension. The open frame design allows complete rear cabinet access with no obstructions. The frame provides quick installation of the LED tiles within a single mounting frame. Adjustable wall foot pads enable fine tune adjustment on uneven surfaces while dual locking latches keep the mount secure in place when service is not required. This make the mounts suitable for use in control rooms, corporate environments, reception areas, high-end retail and broadcasting applications.





PLW 1002 2x2 LED video wall mount

Specifications

Article number (SKU)	7310020
Colour	Black
EAN single box	8712285337468
Height	1350
Width	2400
TÜV certified	No
Guarantee	5 years
Max. weight load (kg/Lbs)	500 / 1102.31
Fischer inside	No
Lock options	Lock included / integrated
Max. distance to the wall (mm / inch)	776 / 30.55
Min. distance to the wall (mm / inch)	169 / 6.65
Service position	Yes
Universal or fixed hole pattern	Fixed

VOGEL'S HOLDING BV (©)

All rights reserved.
Subject to printing errors,
technical and price
amendments.

Date: 2023-01-27