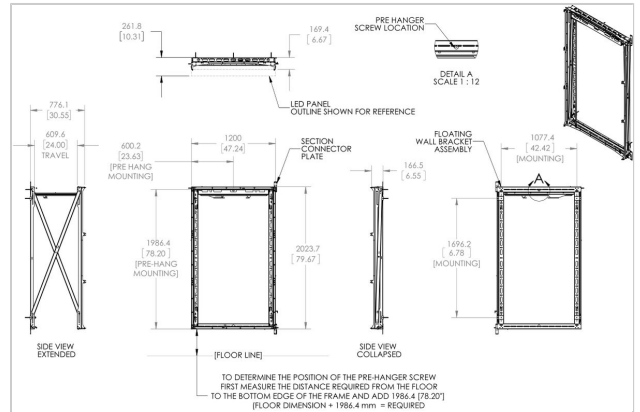
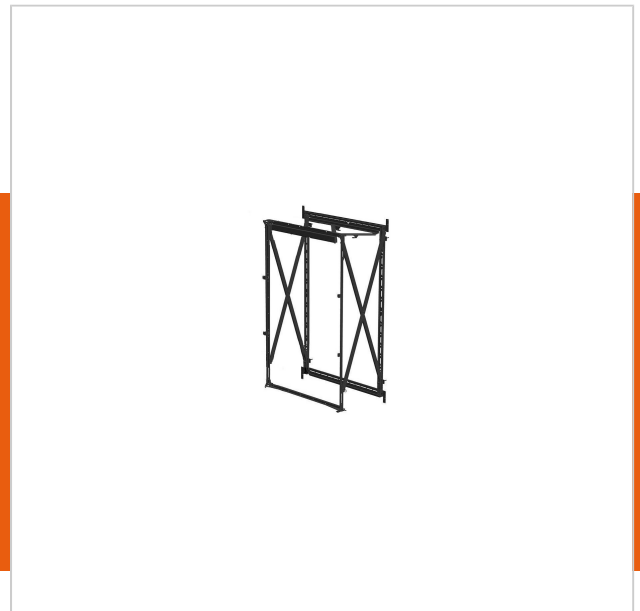


PLW 1003 1x3 LED video wall mount

Article number (SKU) 7310030
 Colour Black

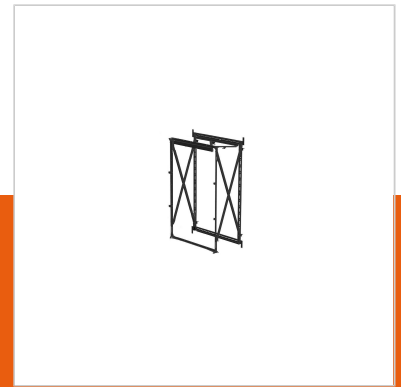
This new rear service mounting solutions supports 1x3 Leyard or Philips LED tiles and provides up to 60 cm of smooth forward extension. The open frame design allows complete rear cabinet access with no obstructions. The frame provides quick installation of the LED tiles within a single mounting frame. Adjustable wall foot pads enable fine tune adjustment on uneven surfaces while dual locking latches keep the mount secure in place when service is not required. This make the mounts suitable for use in control rooms, corporate environments, reception areas, high-end retail and broadcasting applications.

This new rear service mounting solutions supports 1x3 Leyard or Philips LED tiles and provides up to 60 cm of smooth forward extension. The open frame design allows complete rear cabinet access with no obstructions. The frame provides quick installation of the LED tiles within a single mounting frame. Adjustable wall foot pads enable fine tune adjustment on uneven surfaces while dual locking latches keep the mount secure in place when service is not required. This make the mounts suitable for use in control rooms, corporate environments, reception areas, high-end retail and broadcasting applications.



PLW 1003 1x3 LED video wall mount

www.vogels.com



VOGEL'S HOLDING BV 2019 (c) All rights reserved.
Subject to printing errors, technical and price amendments.
Date: 2019-05-17

Specifications

Product type number	PLW 1003
Article number (SKU)	7310030
Colour	Black
EAN single box	8712285337482
Height	2035
Width	1200
TÜV certified	No
Guarantee	5 years
Max. weight load (kg)	375
Fischer inside	No
Lock options	Lock included / integrated
Max. distance to the wall (mm)	776
Min. distance to the wall (mm)	169
Service position	Yes
Universal or fixed hole pattern	Fixed

