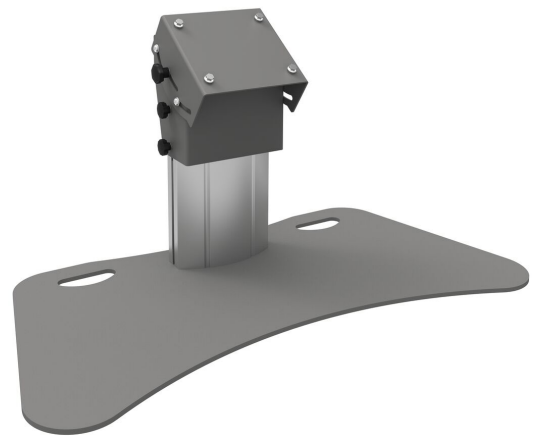
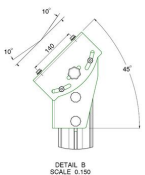
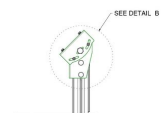
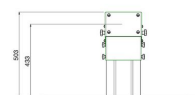
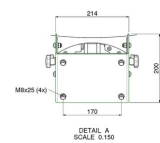
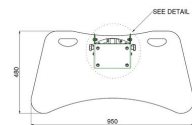


## S062.0535-65 Monitor/Stage stand 350 mm for flat panels up to 65 inch, max. 65 kg (mounting system 170 x 140 mm)

Our monitor/stage stands are available in three models: For screens up to 65 inches (max. 65 kg) with a length of 350 mm For screens up to 65 inches (max. 65 kg) with a length of 950 mm A large version for screens up to 90 inches (max. 90 kg) of 950 mm All three models are available with a floor plate with and without wheels and they all have a tilt adjustment of 35° to 55° degrees. Choose your stand based on screen size and screen type and combine it with mount S052.1000 or S052.2000 (mounting system 170x140 mm).

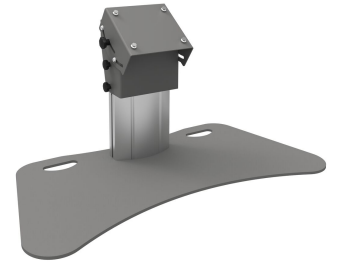


Smart  
metals  
MOUNTING SOLUTIONS





# S062.0535-65 Monitor/Stage stand 350 mm for flat panels up to 65 inch, max. 65 kg (mounting system 170 x 140 mm)



## Specifications

Max. screen size (inch)	65
Bracket Interface	No
Mounting System	170 x 140mm
Max. distance to floor - center display (mm)	433
Max. weight load (kg)	65
Max. weight load (Lbs)	143.3
Tilt	Tilt +35°/+55°
Height	503
Article number (SKU)	S062.0535-65
EAN single box	8718868873071
Colour	Silver
Guarantee	5 years

VOGEL'S HOLDING BV (©)

All rights reserved.  
Subject to printing errors,  
technical and price  
amendments.

Date: 2024-12-06

www.vogels.com

**Vogel's. For Sure.**