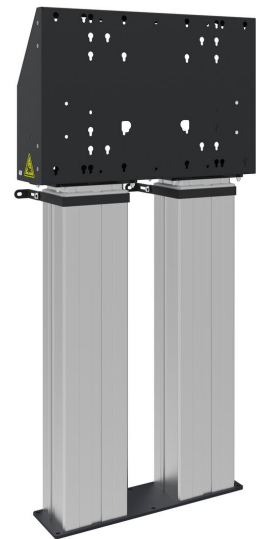
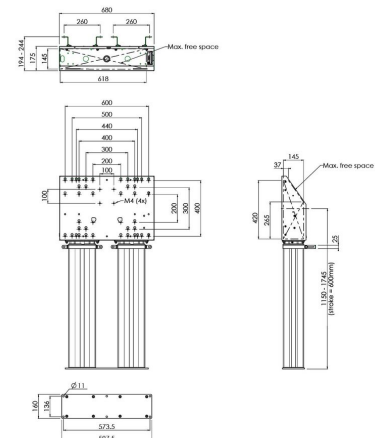


S052.7110 Motorized Display Lift Floor-Wall Solution XL

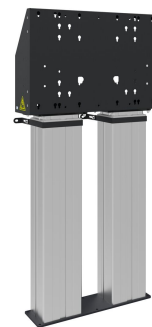
Motorized Display Floor-Wall Lift XL for powerful and flexible installation. The Motorized Display Floor-Wall Lift XL is the ideal solution for mounting large displays easily and safely. With an motorized height adjustment of 600 mm and a universal VESA display mount, this lift is suitable for most VESA patterns. Installation is quick and easy: mount the lift close to the wall and secure it firmly with the adjustable wall mounts. Advanced functionality With the included remote control, you can easily adjust the screen to the desired height. Behind the display mount, space is reserved for placing a mini-PC. A special mounting pattern is integrated for PCs with VESA 75/100, so you can store your equipment neatly and efficiently.



Smart
metals
MOUNTING SOLUTIONS



S052.7110 Motorized Display Lift Floor-Wall Solution XL



Specifications

Motorized	Yes
Max. screen size (inch)	98
Min. horizontal hole pattern (mm)	100
Max. horizontal hole pattern (mm)	600
Min. vertical hole pattern (mm)	100
Max. vertical hole pattern (mm)	400
Min. distance to floor - center display (mm)	1145
Max. distance to floor - center display (mm)	1745
Max. weight load (kg)	200
Max. weight load (Lbs)	440.92
Height adjustment (mm)	600
Article number (SKU)	S052.7110
EAN single box	8718868870292
Colour	Silver
Guarantee	5 years

VOGEL'S HOLDING BV (©)

All rights reserved.
Subject to printing errors,
technical and price
amendments.

Date: 2025-05-30