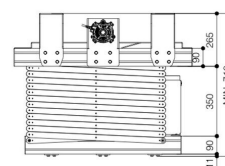
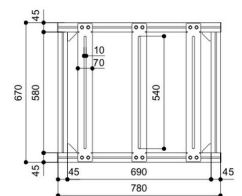
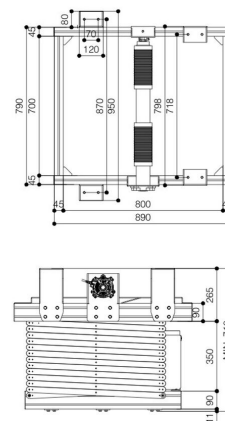


PPL 2500 Projector Lift System

The PPL 2500 projector lift system is the perfect solution for the integration of a large projector at a ceiling for example in an auditorium or conference hall. The lift is equipped with a heavy-duty but silent motor which assures a fast and stable up-down movement of the projector. Furthermore, the motor is provided with an RF remote controller and offers the possibility to set three motor limit stops: an upper, intermediate and a down stop. The intermediate stop can be set at the desired height for projection mode, whereas the down one can be adjusted up to 500 cm stroke and can be used as a service mode position. The maximum weight capacity of the projector lift is 70 kg.





PPL 2500 Projector Lift System



Specifications

Article number (SKU)	7025000
Colour	Black
EAN single box	8712285338465
Width	790
Depth	890
TÜV certified	Yes
Guarantee	2 years
Guarantee electrical parts	2 years
Max. weight load (kg/Lbs)	70 / 154.32
Average power consumption (W)	265
Certifications	CE
Max. distance to ceiling (mm)	5705
Min. distance to ceiling (mm)	705
Voltage	230 V, 50 Hz

VOGEL'S HOLDING BV (©)

All rights reserved.
Subject to printing errors,
technical and price
amendments.

Date: 2023-01-25



Vogel's. For Sure.