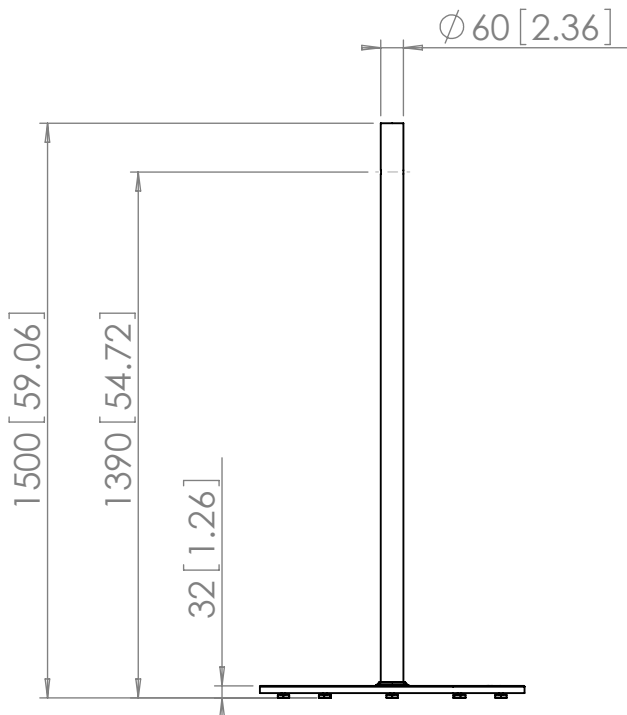
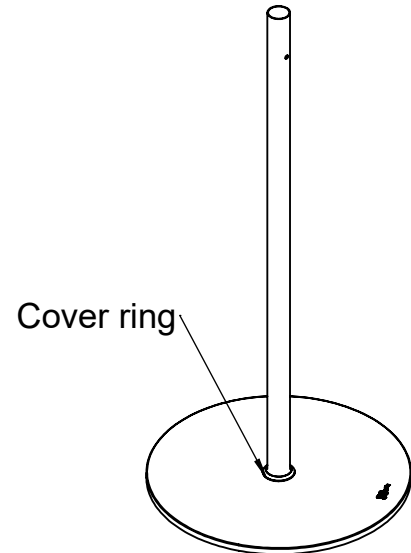
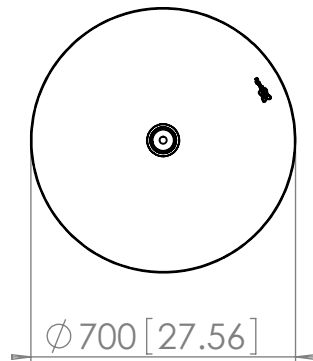


Product data sheet

Dimensions in mm [inch]

catalogus prof Assy. PFF1550

max. size 50"
weight 45Kg/99lbs



- Stainless steel cover and tube (grinded)
- To combine with PFA 9001, PFA9002 or PFA9030
- Five height adjustable screws for floor plate

00

Note:

This document and specifications herein are confidential and the exclusive property of Vogel's Products b.v. Neither this design nor any information contained in this drawing may be reproduced or disclosed to others without written consent of Vogel's Products b.v. The design and information will not be reproduced, copied or used, either in part or in its entirety, as the basis for the manufacture or sale of items without written permission.

Warning: Please study all instructions and illustrations carefully before installation.

Information in this document is subject to change without further notice.

T310996_02_00
04-11-2008