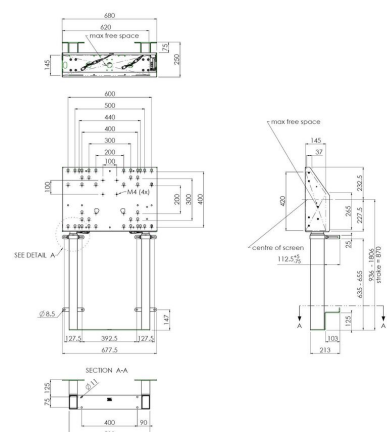


S052.7150W Motorized Display Floor-Wall Lift

This floor-supported wall lift, thanks to its 2 columns, offers extra stability and sturdiness for working with a touch display. The display is easily adjusted to height with the controller, which silently and electrically adjusts it. At the rear of the mounting device, space has been created for the placement of a mini PC.



**Smart
metals**
MOUNTING SOLUTIONS



S052.7150W Motorized Display Floor-Wall Lift



Specifications

Max. screen size (inch)	86
Min. horizontal hole pattern (mm)	100
Max. horizontal hole pattern (mm)	600
Min. vertical hole pattern (mm)	100
Max. vertical hole pattern (mm)	600
Min. distance to floor - center display (mm)	936
Max. distance to floor - center display (mm)	1806
Max. weight load (kg)	120
Max. weight load (Lbs)	264.55
Height adjustment (mm)	870
Article number (SKU)	S052.7150W
EAN single box	8718868870605
Colour	White

VOGEL'S HOLDING BV (©)

All rights reserved.
Subject to printing errors,
technical and price
amendments.

Date: 2024-12-09