

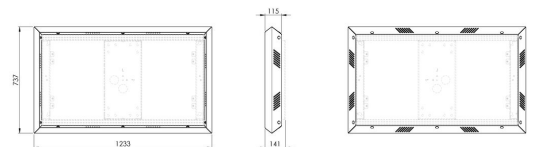
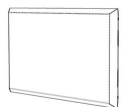


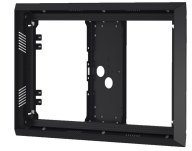
OWMLG49XE4F Outdoor Wall Mount for LG 49XE4F

Key Benefits

- Anti-corrosion treatment for outdoor
- Theft prevention
- Portrait and landscape position
- Stylish design
- Quick and easy installation

Mount your 49 inch LG outdoor display to the wall with the mounting solution from Vogel's. Specially for the LG 49XE4F outdoor display, Vogel's has put together an outdoor wall mount kit that allows you to easily install your outdoor display on any suitable outdoor wall. In both landscape and portrait positions. The kit contains: • 1x POW 1601 Outdoor wall mount for LG 49XE4F • 1x POA 9601 Outdoor frame for LG 49XE4F





OWMLG49XE4F Outdoor Wall Mount for LG 49XE4F

Specifications

Article number (SKU)	7951110
Colour	Black
EAN single box	8712285352027
Height	737
Width	1233
Depth	141
TÜV certified	Yes
Guarantee	2 years
Min. screen size (inch)	49
Max. screen size (inch)	49
Max. weight load (kg/Lbs)	35 / 77.16
Max. screen size (inch)	49
Min. screen size (inch)	49
Orientation	Landscape / Portrait
Universal or fixed hole pattern	Fixed

VOGEL'S HOLDING BV (©)

All rights reserved.
Subject to printing errors,
technical and price
amendments.

Date: 2023-01-27



Vogel's. For Sure.