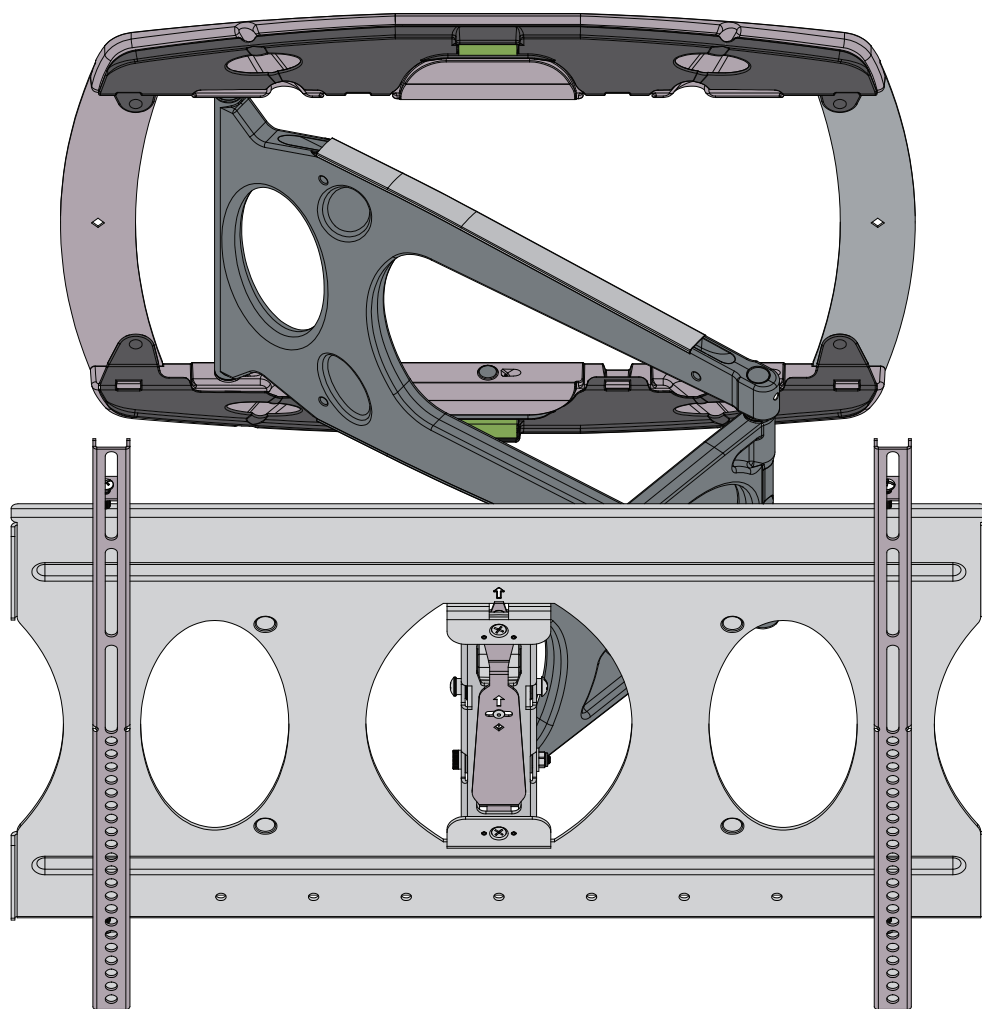


PFW 6850

Installation Guide

Installationsanleitung, Guía de Instalación, Guida de Installazione,
Guide d'Installation, Installatie gids



- (GB) Subject to printing errors and technical amendments.
(NL) Drukfouten en technische wijzigingen voorbehouden.
(F) Sous réserve de fautes d'impression et de modifications techniques.
(D) Für Druckfehler übernehmen wir keine Verantwortung.
Technische Änderungen vorbehalten.
(E) Reservados errores de imprenta y sujete a modificaciones.
(I) Con riserva di modifiche tecniche e di eventuali errori di stampa.
(P) Reserva-se a ocorrência de gralhas e de modificações técnicas.
(H) Nyomdahibák és technikai változtatások joga fenntartva.
(PL) Zastrzeżenie się możliwość występowania błędów drukarskich i zmian technicznych.
(RUS) Возможны ошибки при печати и технические модификации.

Designed and engineered in the Netherlands
More information on: www.vogels.com

VOGEL'S PRODUCTS BV, HONDSRUGLAAN 93, 5628 DB EINDHOVEN, THE NETHERLANDS



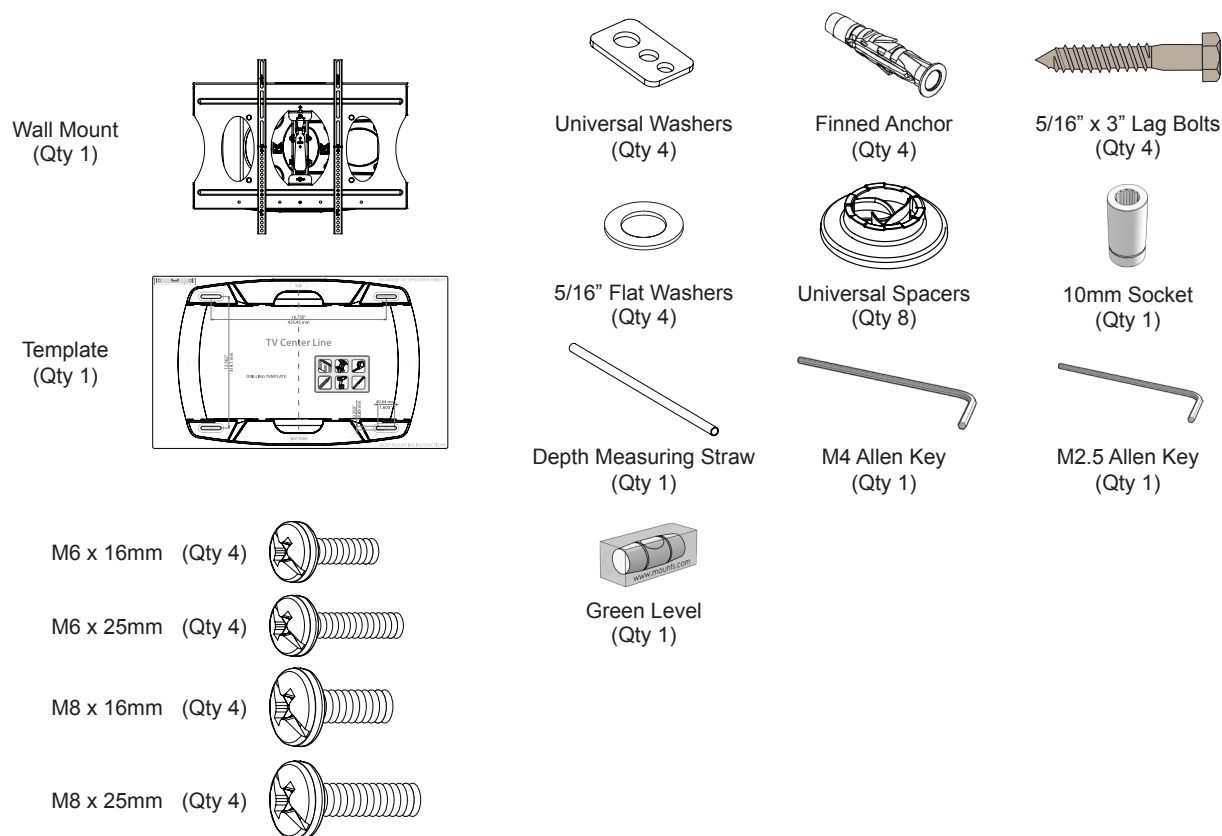
Max: 30kg/66lbs

PFW 6850

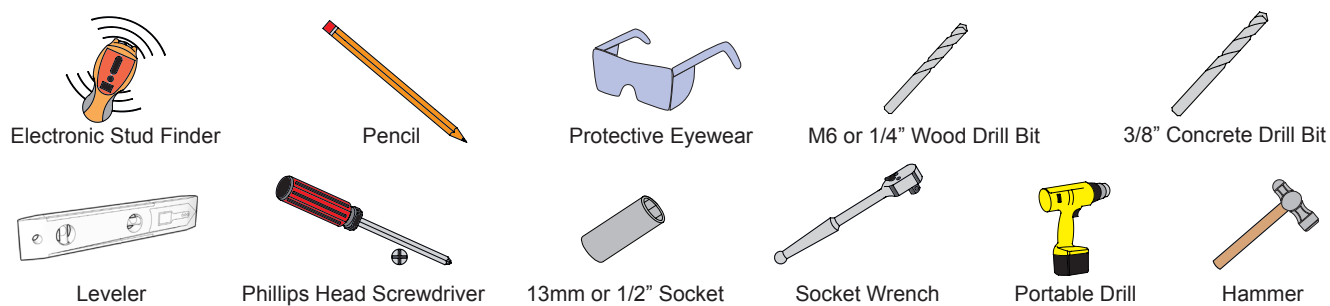
Installation Guide

Installationsanleitung, Guía de Instalación, Guida de Installazione, Guide d'Installation, Installatie gids

INCLUDED COMPONENTS



TOOLS FOR INSTALLATION



www.vogels.com | Europe +31 (0)40 26 47 400

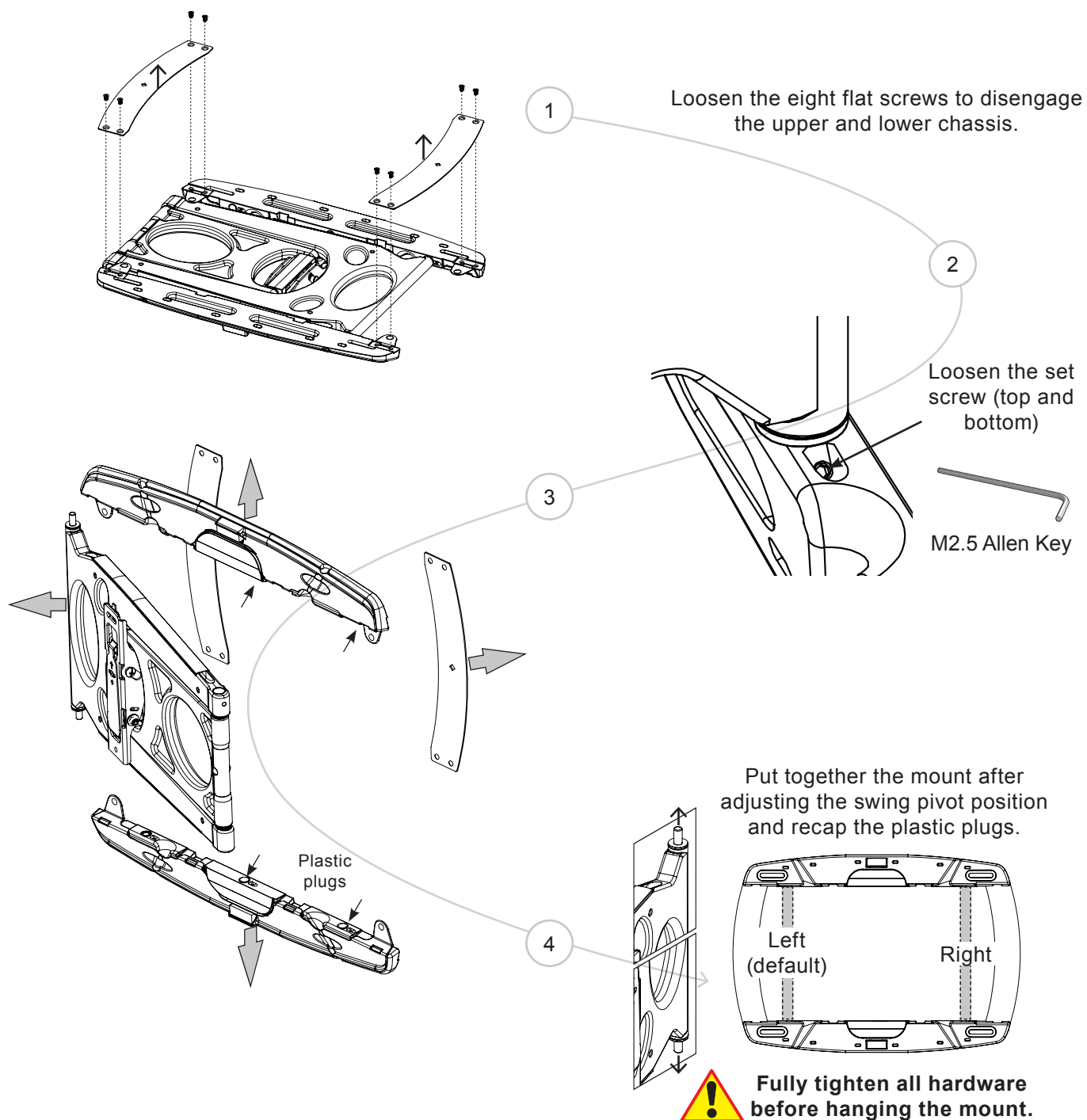
PFW 6850

Installation Guide

Installationsanleitung, Guía de Instalación, Guida de Installazione, Guide d'Installation, Installatie gids



OPTIONAL: CHANGING THE DEFAULT SWINGOUT PIVOT POSITION



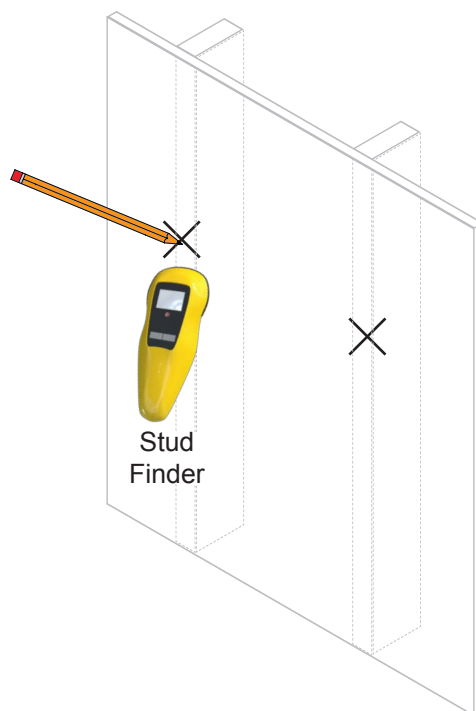
PFW 6850

Installation Guide

Installationsanleitung, Guía de Instalación, Guida de Installazione, Guide d'Installation, Installatie gids

1

Find the center of the wood studs and mark the wall with a pencil



FOR CONCRETE APPLICATIONS SEE PAGE 6

2

Position the template to the desired location.

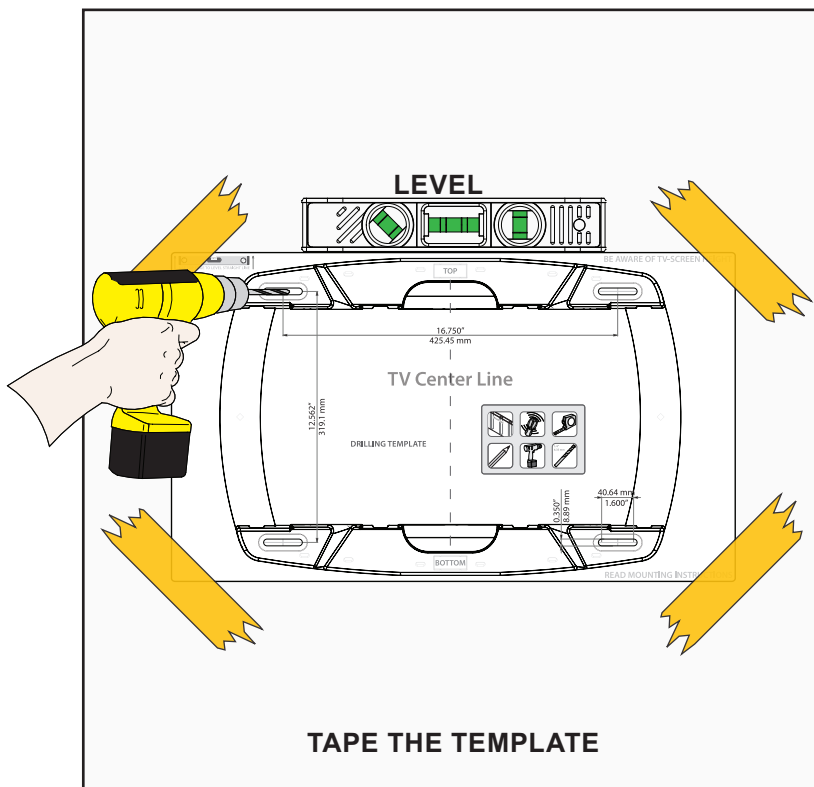
Drill into 4 marked mounting points on the wall surface.

Wood Application:

Use 1/4" drill bit

Concrete Application:

Use 3/8" drill bit

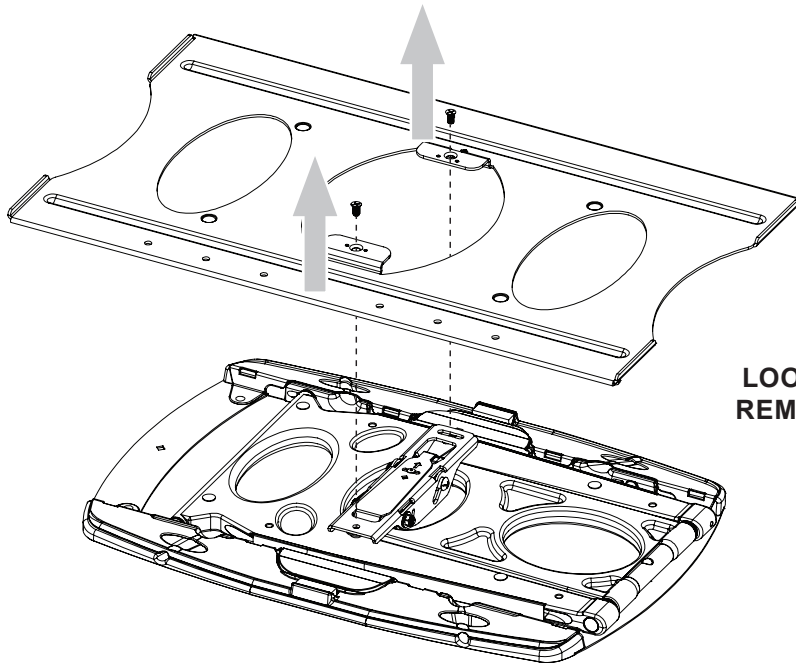


PFW 6850

Installation Guide

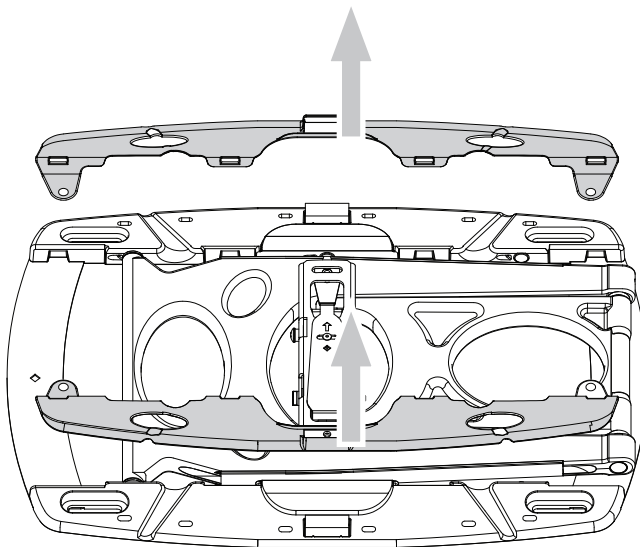
Installationsanleitung, Guía de Instalación, Guida de Installazione, Guide d'Installation, Installatie gids

3



**LOOSEN THE (2) M5 FLAT SCREWS TO
REMOVE THE BRACKET MOUNT PLATE**

4



**DETACH THE CABLE ACCESS COVERS
TO EXPOSE THE MOUNTING LOCATIONS**



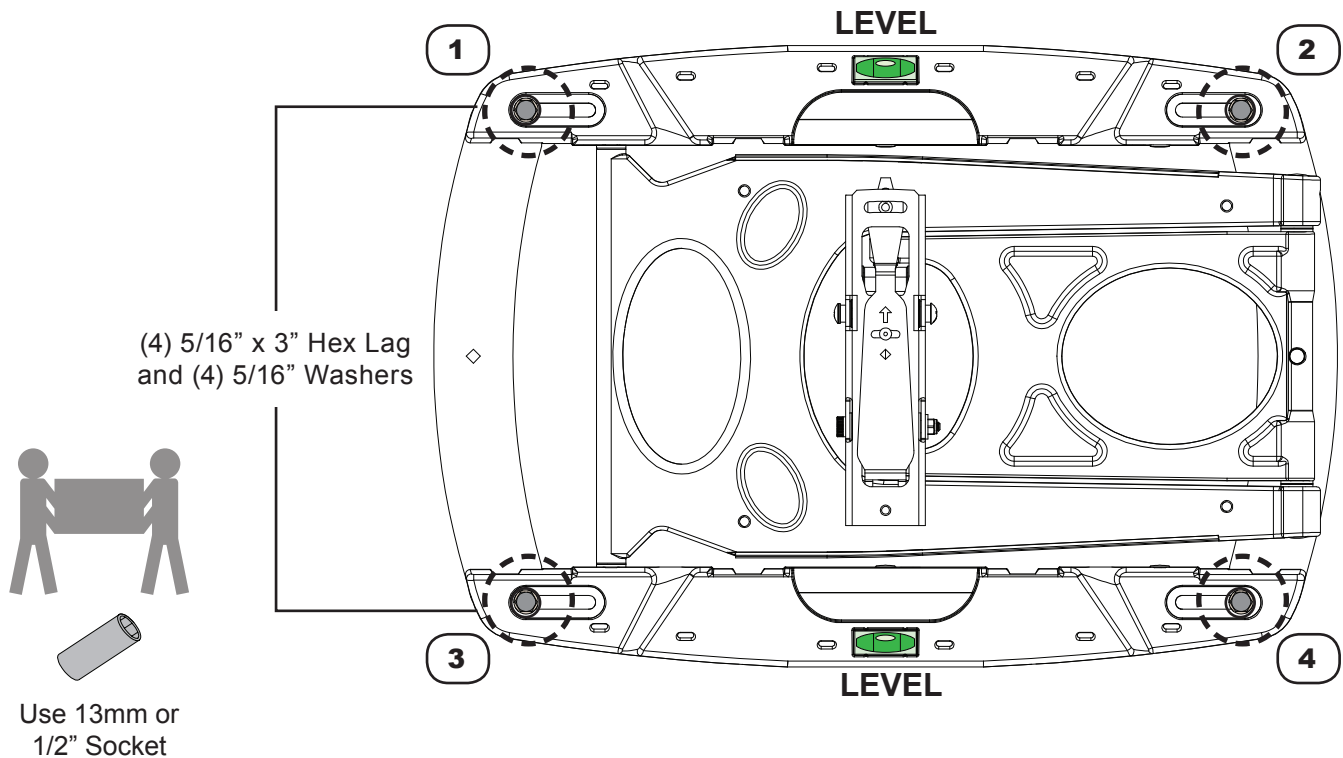
PFW 6850

Installation Guide

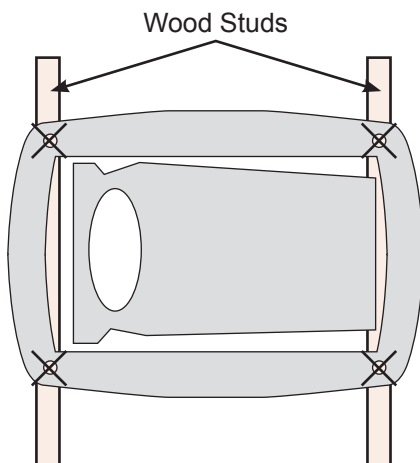
Installationsanleitung, Guía de Instalación, Guida de Installazione, Guide d'Installation, Installatie gids

5

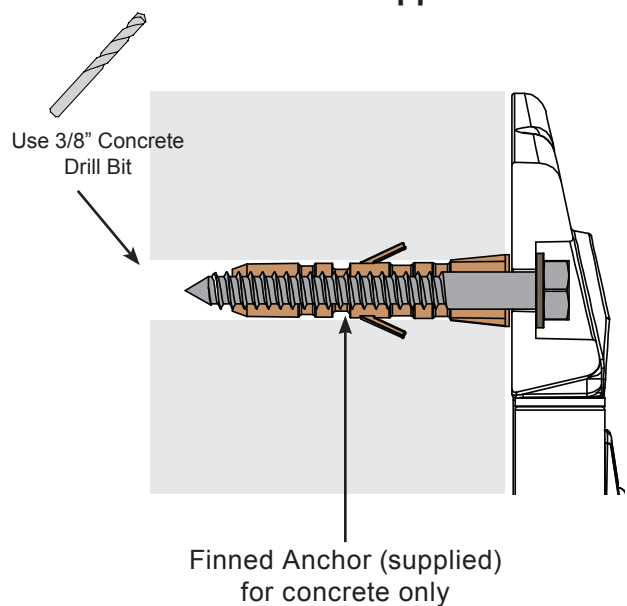
Confirm the placement of the mounting screws before bolting into place.



Wood Application



Concrete Application

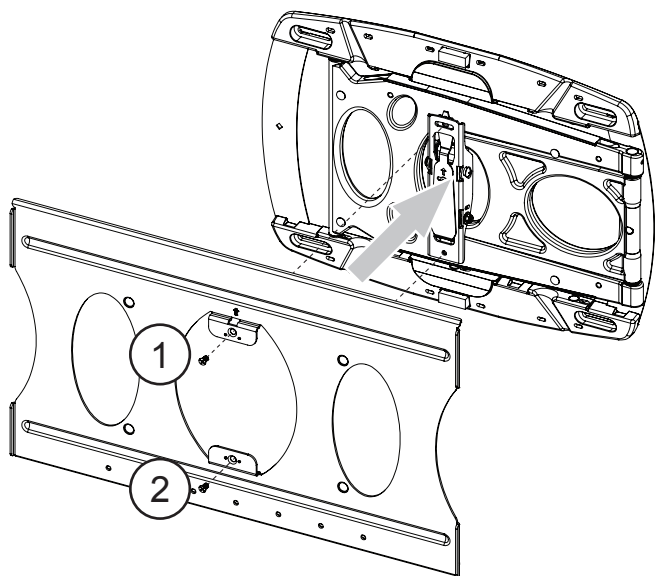


PFW 6850

Installation Guide

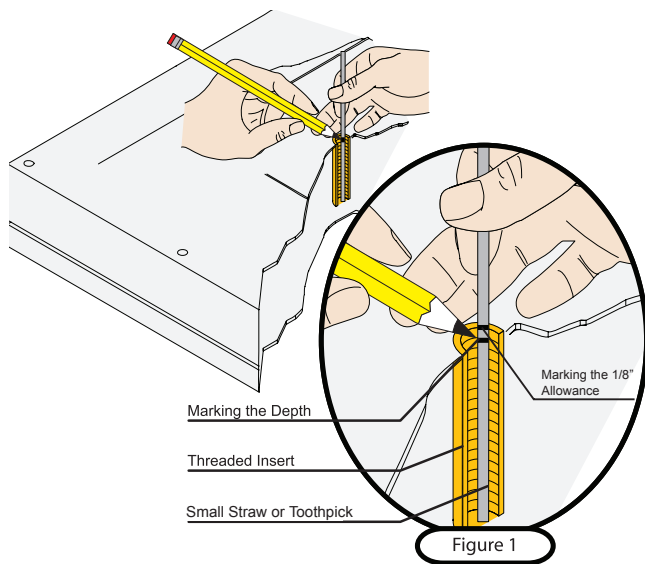
Installationsanleitung, Guía de Instalación, Guida de Installazione, Guide d'Installation, Installatie gids

6



FASTEN USING (2) M5 FLAT SCREWS TO SECURE THE BRACKET MOUNT PLATE

7



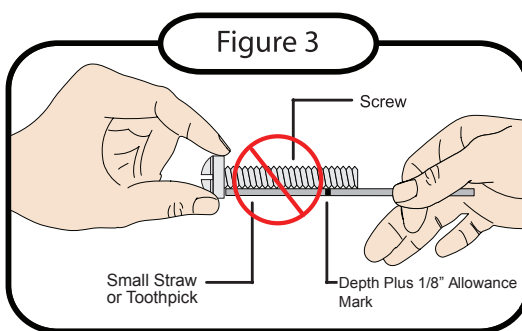
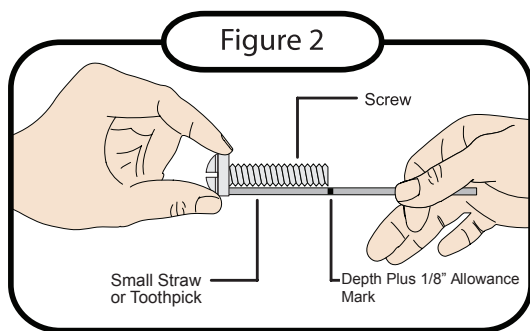
Selecting the Mounting Hardware

- 1) Insert a small straw or toothpick into the threaded inserts found on the back of the flat-panel.
- 2) Use a pencil to mark the depth of the threaded insert on the small straw or toothpick.
- 3) Mark the straw or toothpick 1/8" above the depth of the threaded insert, as shown in Figure 1.
- 4) Insert the small straw or toothpick into the remaining threaded inserts to compare and verify their depth using the straw or toothpick's 1/8" allowance mark.
- 5) Locate the correct diameter screw for the threaded insert.



If the screw you selected is longer than the 1/8" allowance mark on the small straw or toothpick, as shown in Figure 2 and Figure 3, do not use this screw. The screw length must not bypass the mark.

- 6) Test each size of the screws provided.
The correct screws should thread easily into the mounting point and not pull out when tension is applied.



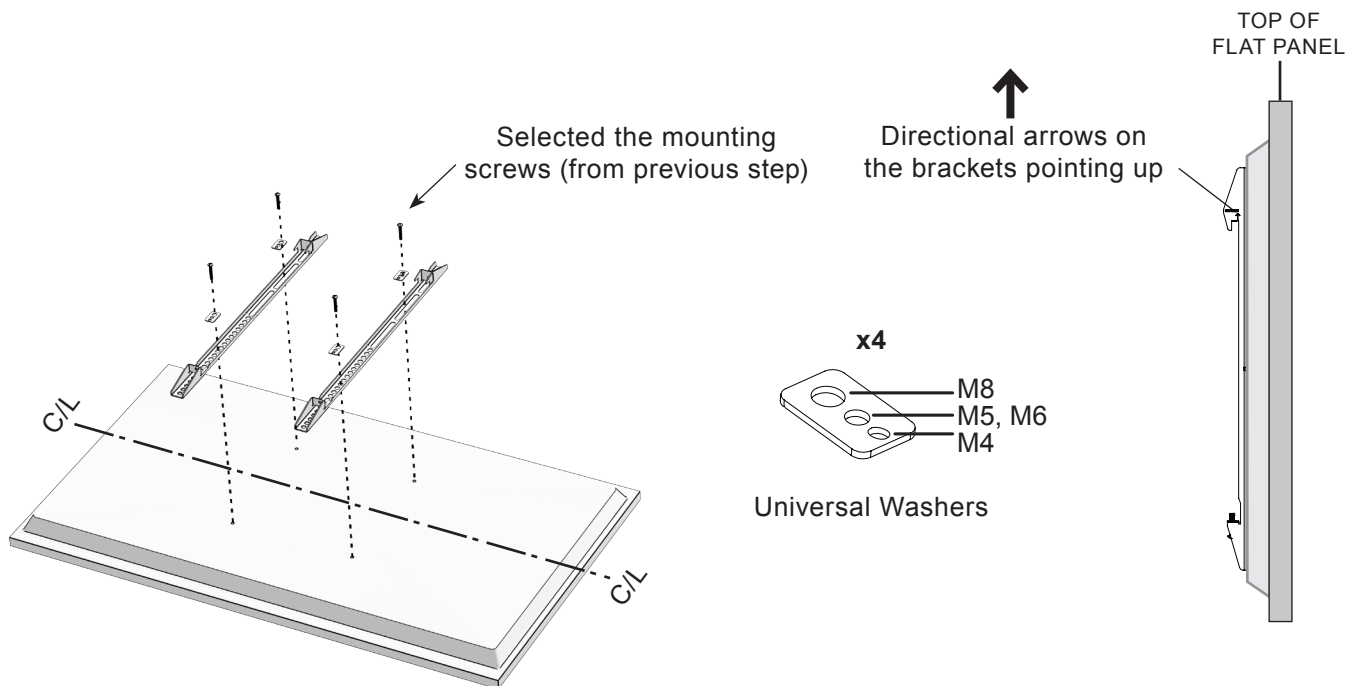
PFW 6850

Installation Guide

Installationsanleitung, Guía de Instalación, Guida de Installazione, Guide d'Installation, Installatie gids

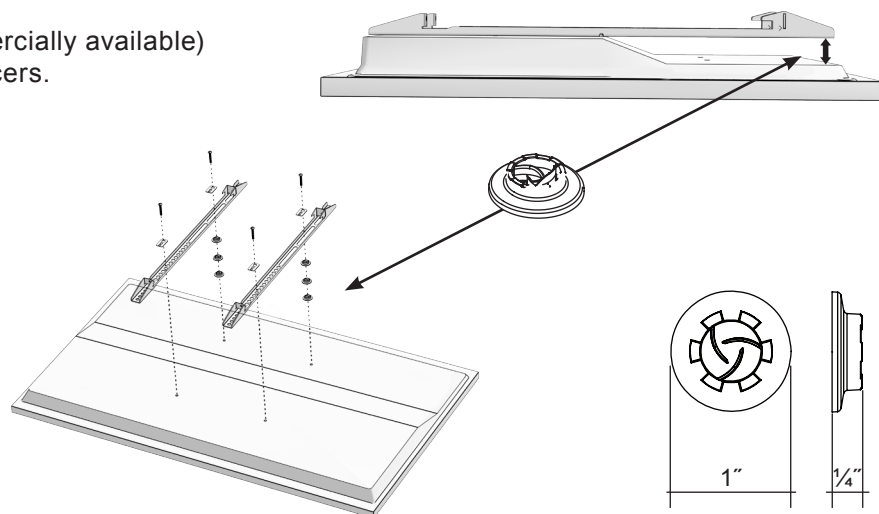
8

INSTALL THE MOUNTING BRACKETS



USE ADDITIONAL UNIVERSAL SPACERS TO FILL UNEVEN GAPS

Longer screws length (commercially available) might be needed if using spacers.

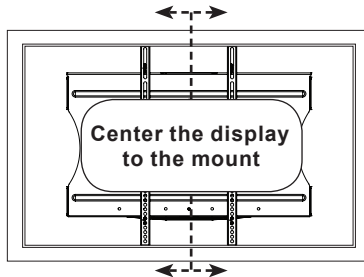
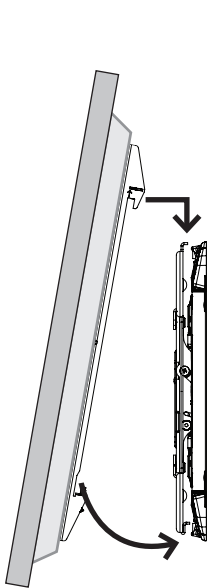


PFW 6850

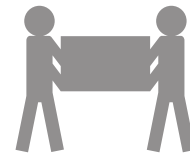
Installation Guide

Installationsanleitung, Guía de Instalación, Guida de Installazione, Guide d'Installation, Installatie gids

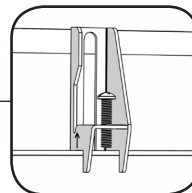
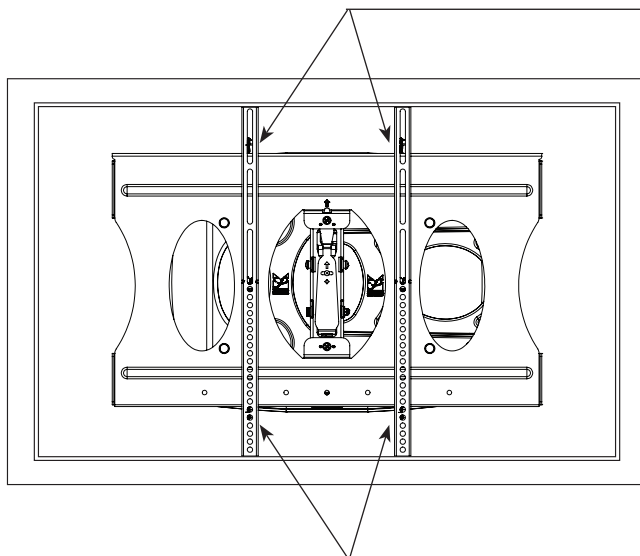
9



**HOOK THE DISPLAY BRACKETS
TO THE MOUNT**

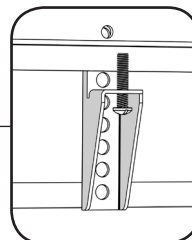


10



Post leveling control
adjustment screws.

**POST-LEVELING
(RETRACTED POSITION)**



Tighten these screws to
lock the brackets in place.

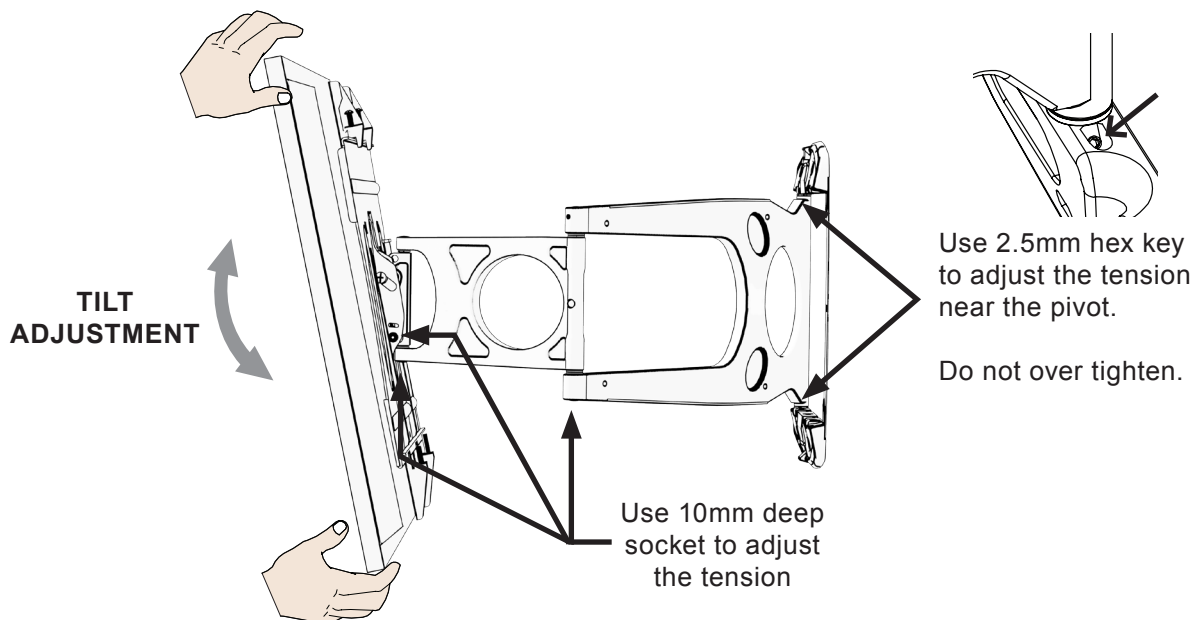


PFW 6850

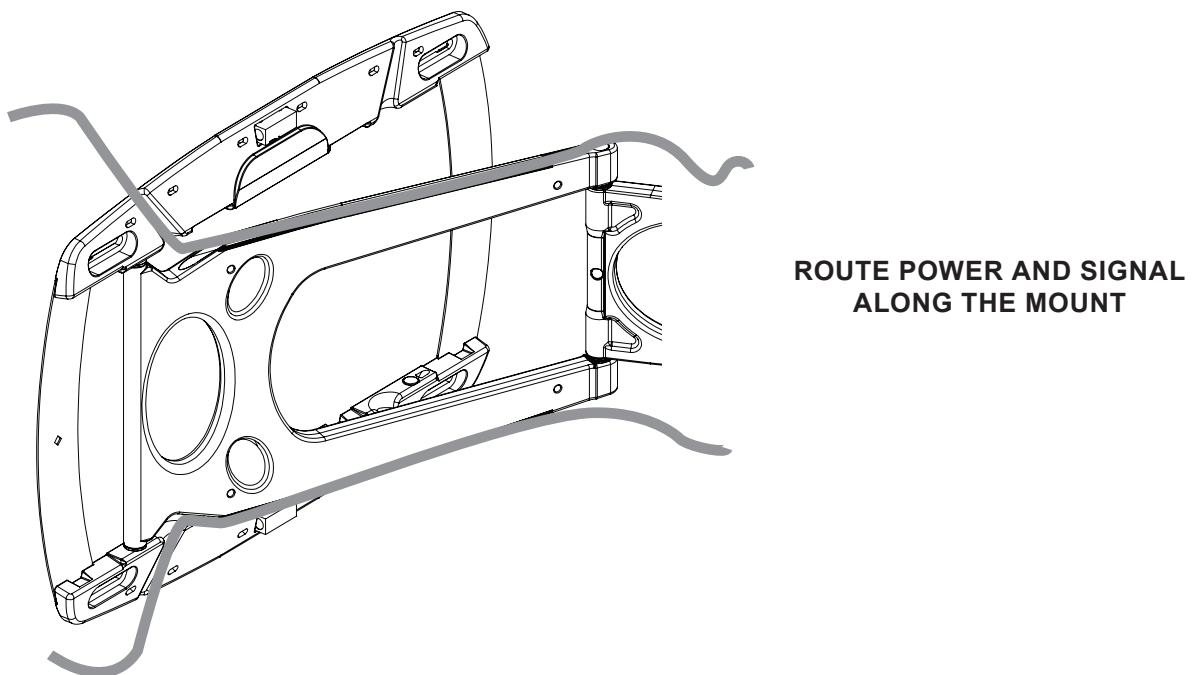
Installation Guide

Installationsanleitung, Guía de Instalación, Guida de Installazione, Guide d'Installation, Installatie gids

11



12

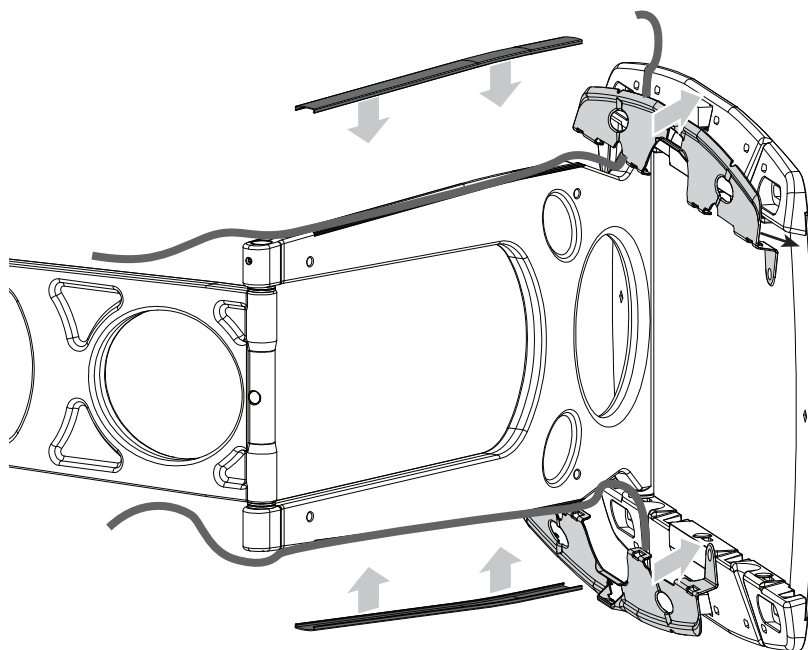


PFW 6850

Installation Guide

Installationsanleitung, Guía de Instalación, Guida de Installazione, Guide d'Installation, Installatie gids

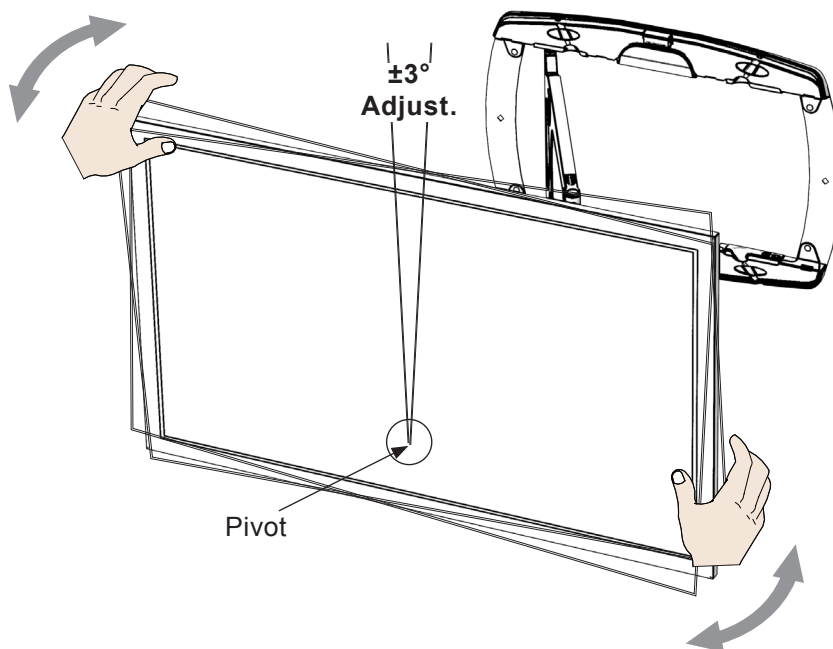
13



**INSTALL THE CABLE COVERS
AND MOUNTING COVERS**

14

SECONDARY POST LEVELING ADJUSTMENT



**RETRACTED OR
EXTENDED
POSITION**

